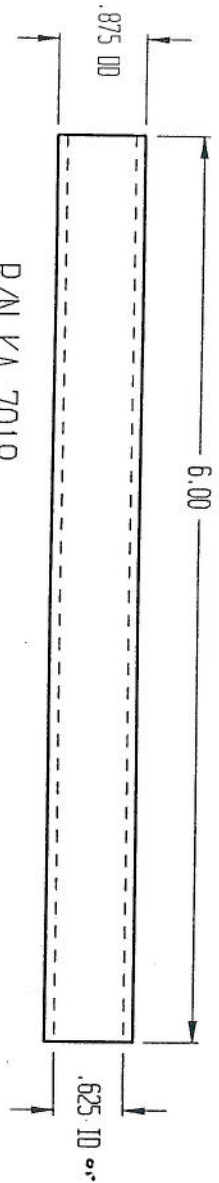


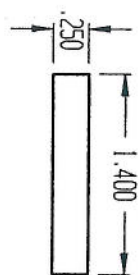
ITEM 2 (2 REQ'D)  
KA4006-1

NOTES: REMOVE ALL BURRS AND SHARP EDGES

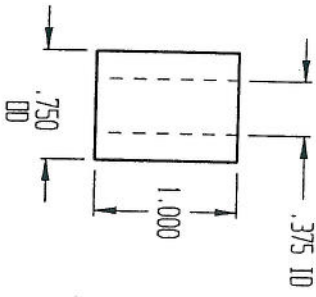
2	2	KA4006-1 .50 O/D X .253 I/D CRS BUTTIN	REV
1	1	.75 SBU .065 WALL CRS TUBE	-
ITEM	QTY	DISCRIPTION	
KENNERIES AVIATION			
SCALE		DWG. NAME	REV
NONE		LOWER LINK	-
SHEET		1 of 1	



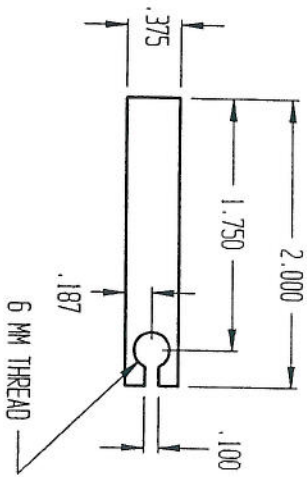
P/N KA 7018  
ITEM 2 (2 REQ'D)  
.875 O/D X .635 I/D (CHROMOLY TUBE)



P/N KA7019  
ITEM 3 (2 REQ'D)  
.250 DIA CRS ROD



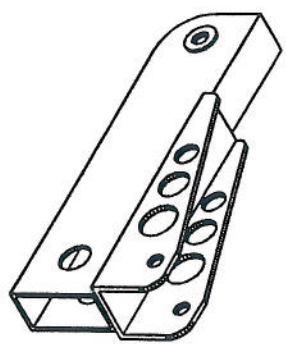
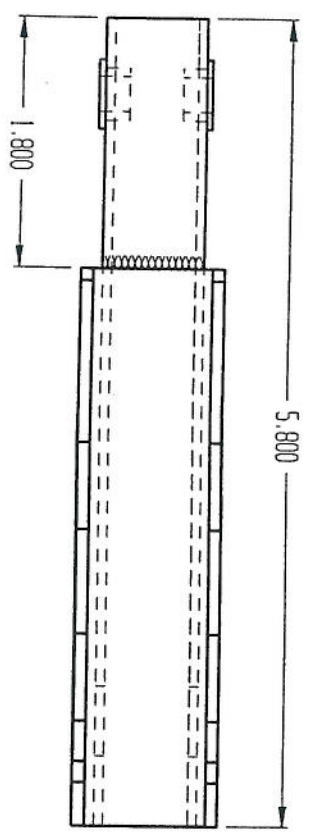
P/N KA7020  
ITEM 4 (2 REQ'D)  
.750 O/D X .375 I/D CRS.



P/N KA7017  
ITEM 5 (2 REQ'D)  
.375 SQUARE CRS

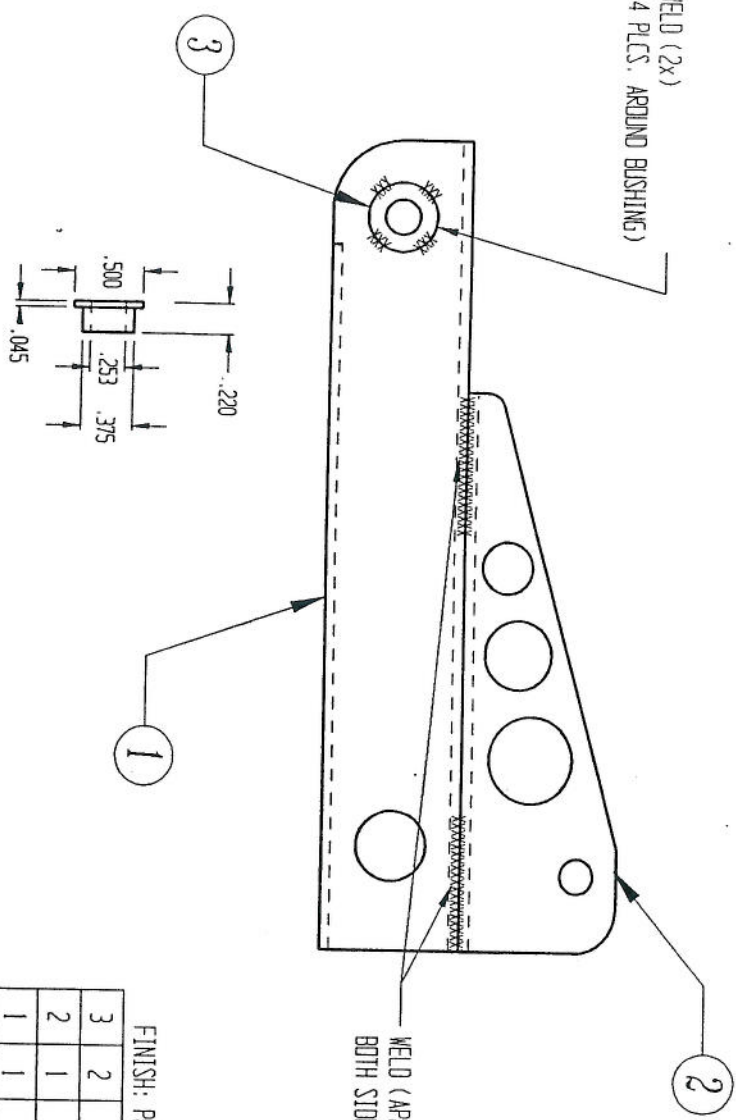
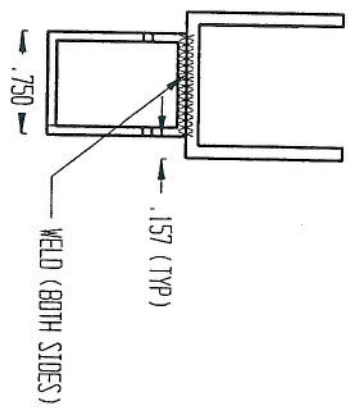
KEMMERIES AVIATION		DWG NAME FORK ASSY, SUBS		REV
SCALE	NONE			
		SHEET	1 of 1	

MAIN ASSY # KA7000



WELD (2x)  
(4 PLCS. AROUND BUSHING)

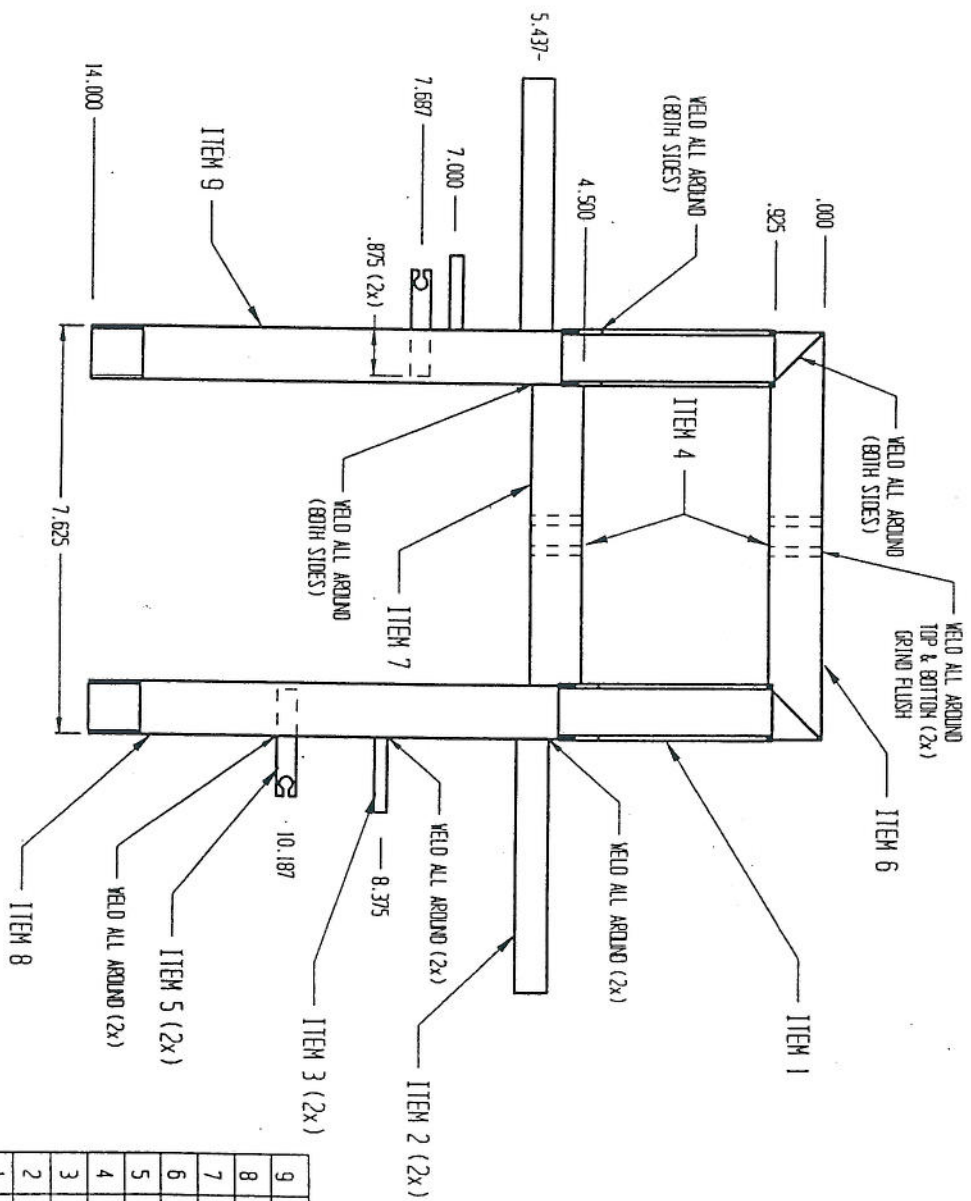
WELD (APPROX 1")  
BOTH SIDES



FINISH: POWDER COAT, BLACK WRINKLE

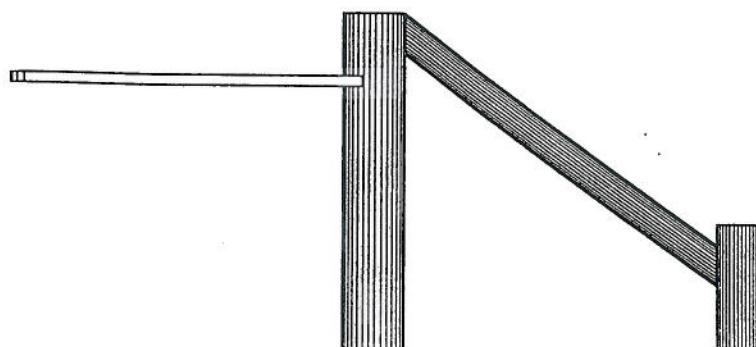
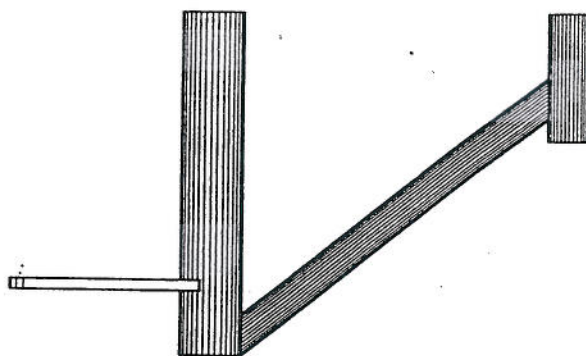
KA 7022 (ITEM 3)  
.500 OD X .253 ID CRS

ITEM	QTY	DESCRIPTION	REV
3	2	KA7022, BUSHING	
2	1	KA7021, SHOCK MOUNT	
1	1	KA7006, LOWER LINK	
DWG. NAME LOWER LINK, RIGHT			
SCALE NONE			
SHEET 1 of 1			

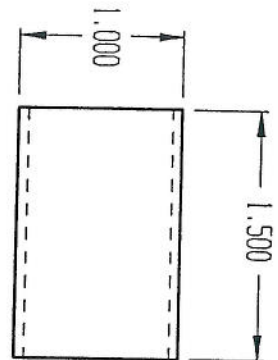


KEMMERIES AVIATION		DWG. NAME		7" FORK WELDMENT		REV	
SCALE	NONE			SHEET	1 of 1		

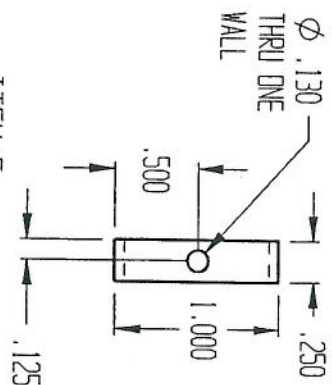
ITEM	QTY	DESCRIPTION
9	1	KA4002 UPPER LEG, LEFT
8	1	KA4003 UPPER LEG, RIGHT
7	1	KA4005 CENTER CROSS BRACE
6	1	KA4004 UPPER CROSS BRACE
5	2	KA4007 CABLE BULK
4	2	KA4010 BUSHING
3	2	KA4009 LEVER STOP
2	2	KA4008 FOOT PEG
1	2	KA4001 SHOCK BRACKET



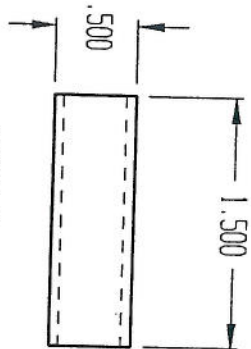




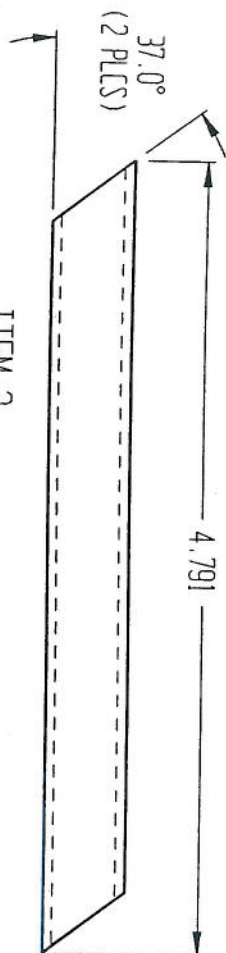
ITEM 1  
KA7008, SLEEVE  
1.0 DIA .058 WALL CHROMOLY



ITEM 5  
KA7009, COLLAR  
1.0 DIA .058 WALL CHROMOLY

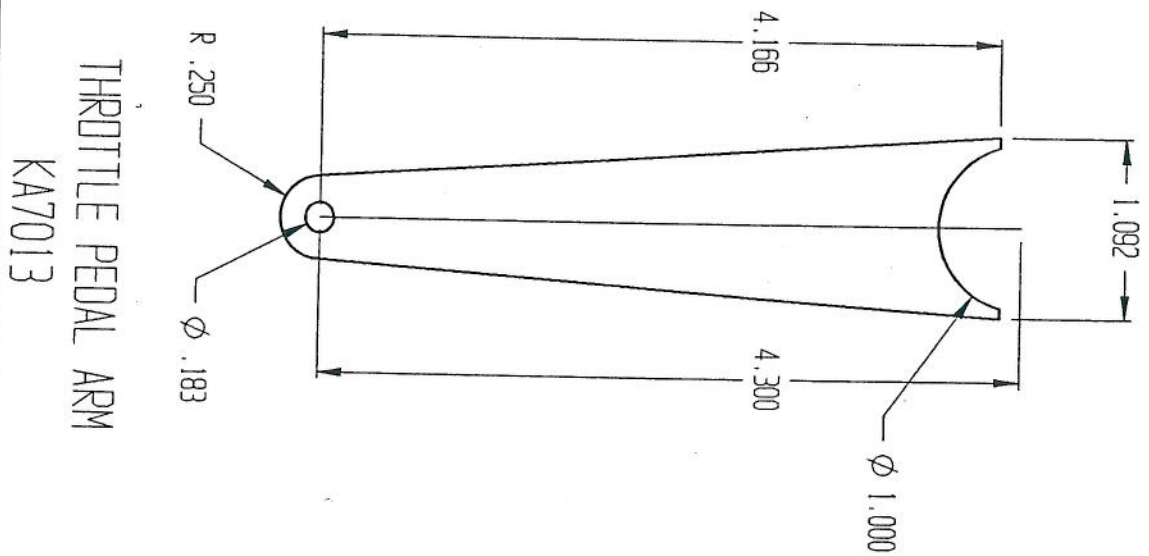


ITEM 3  
KA7011, PEDAL END  
.50 DIA .06 WALL CRS

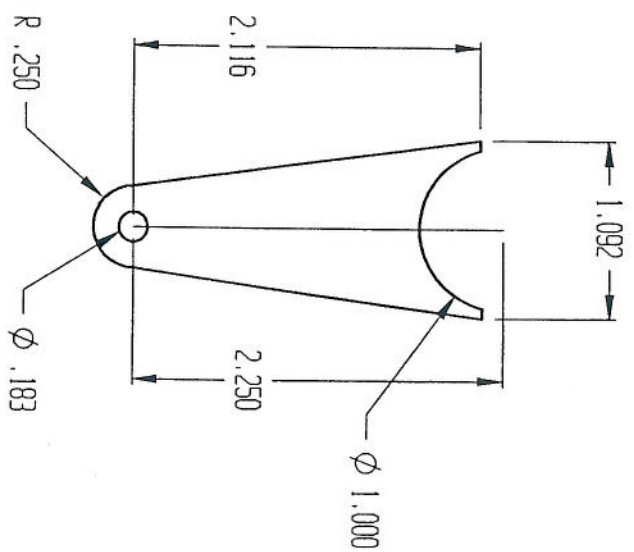


ITEM 2  
KA7010, ANGLE TUBE  
.50 DIA .065 WALL CRS

KENNERIES AVIATION		DRG. NAME	PEDAL ASSY SUBS	REV
SCALE	NONE		SHEET	1 of 1



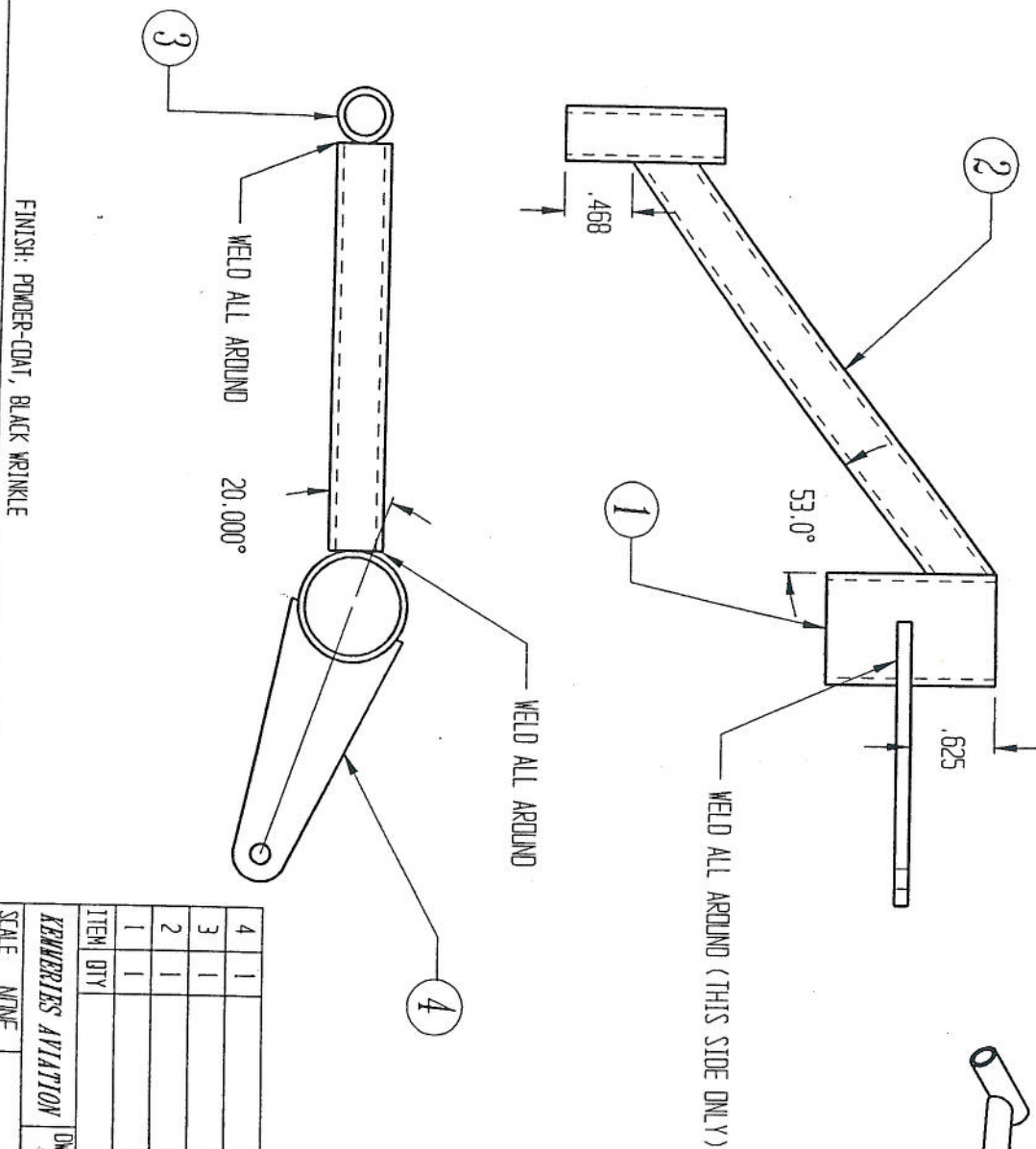
SUB ASSY # KA7016



SUB ASSY # KA7014

MATERIAL: .119 THK CRS

KEMMERIES AVIATION		DWG NAME		PEDAL ARMS		REV
SCALE	NONE			SHEET	1 of 1	



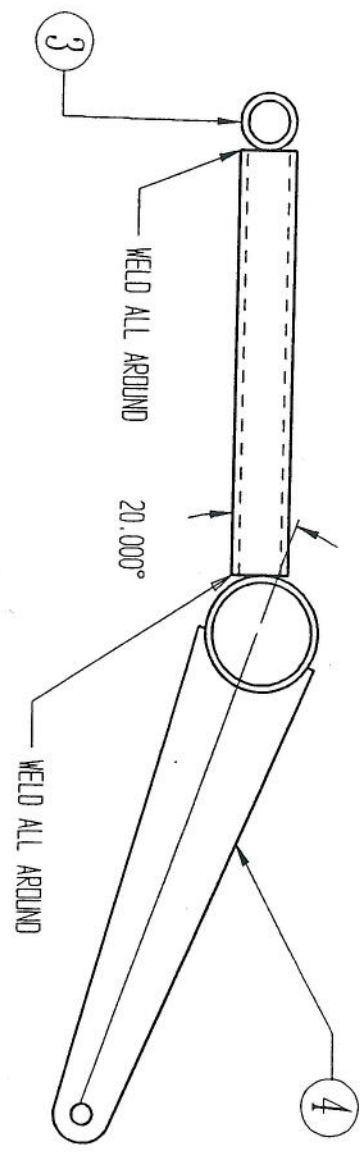
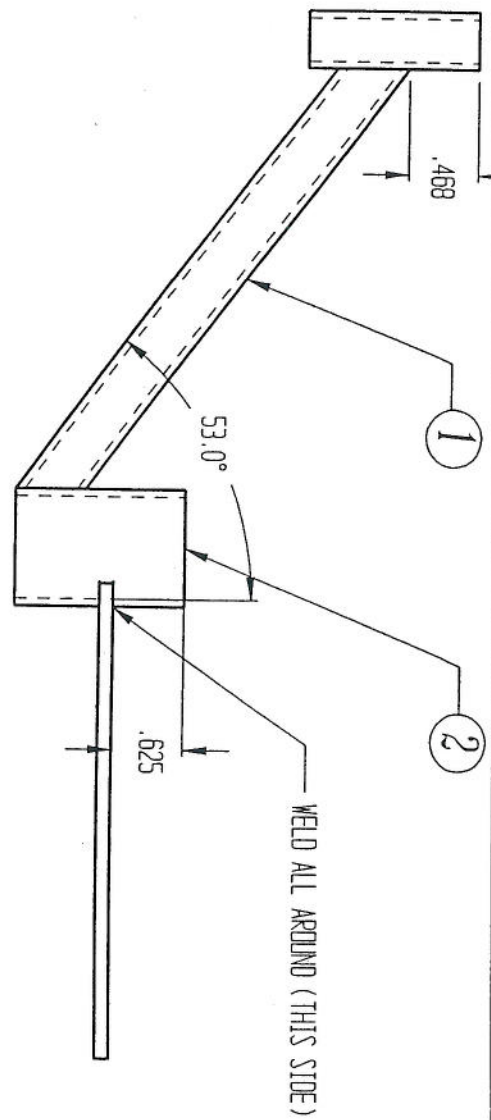
ITEM	QTY	DESCRIPTION
4	1	KA7012, BRAKE LEVER
3	1	KA7011, PEDAL END
2	1	KA7010, ANGLE TUBE
1	1	KA7008, SLEEVE

SCALE	NONE	SHEET	1 of 1
-------	------	-------	--------

REV	-
-----	---

ASSY # KA7015



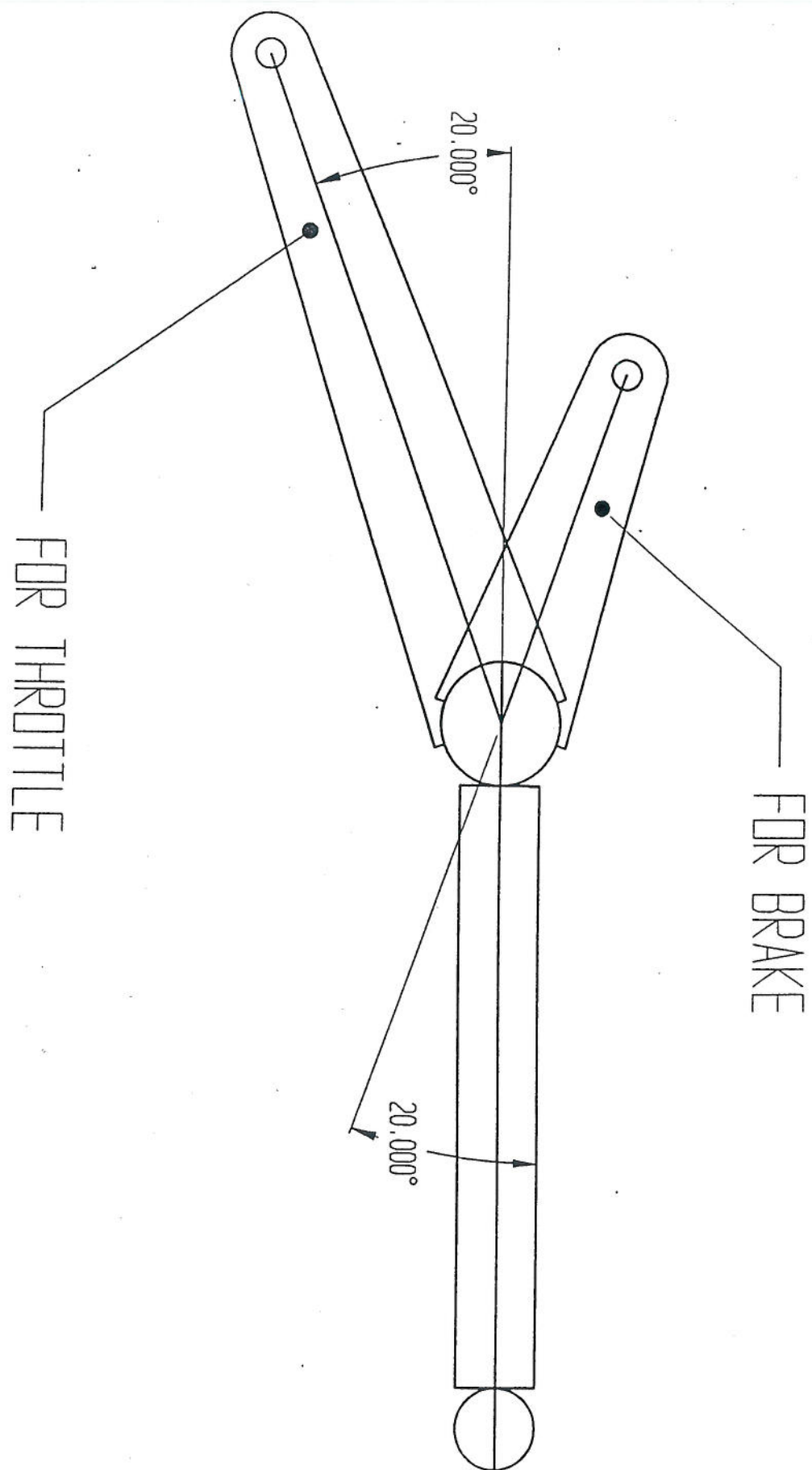


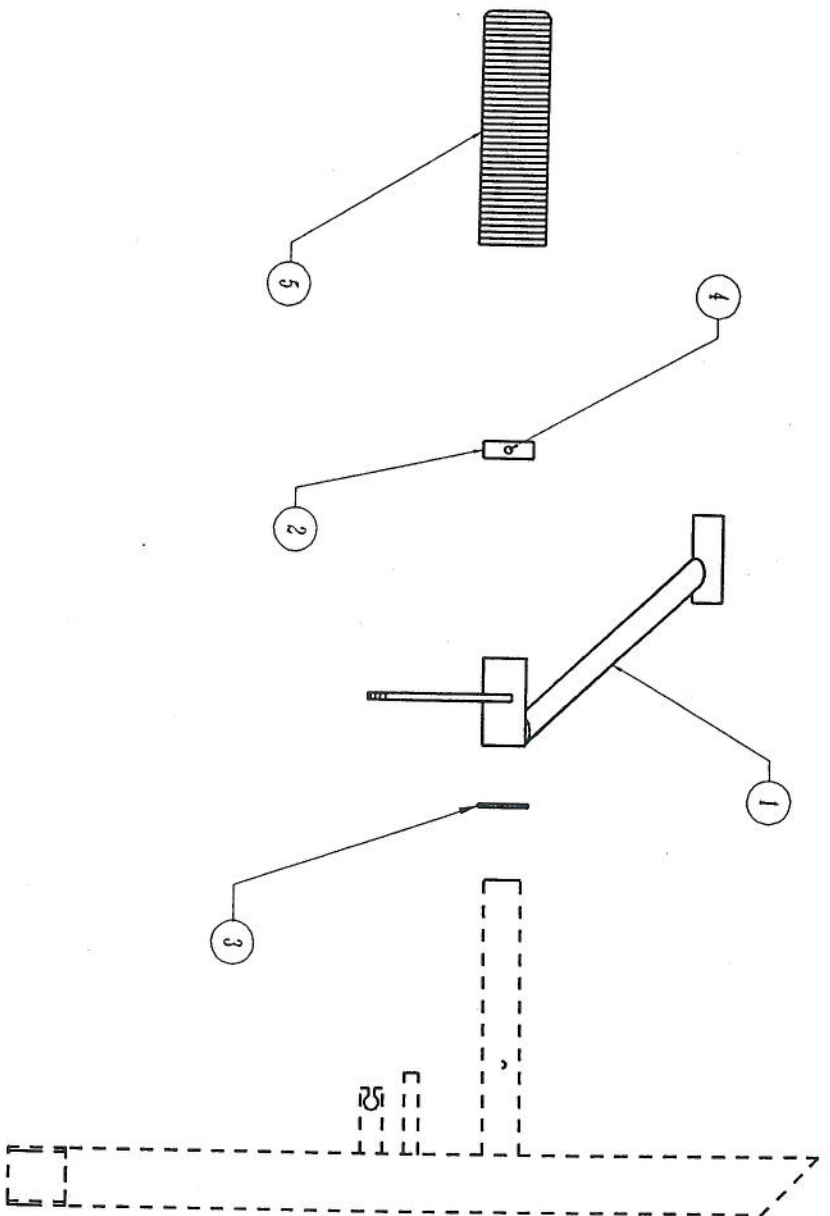
ITEM	QTY	DESCRIPTION
4	1	KA7013 THROTTLE LEVER
3	1	KA7011, PEDAL END
2	1	KA7010, ANGLE TUBE
1	1	KA7008, SLEEVE

SCALE	DATE	REV
NONE		

FINISH: POWDER-COAT, BLACK WRINKLE

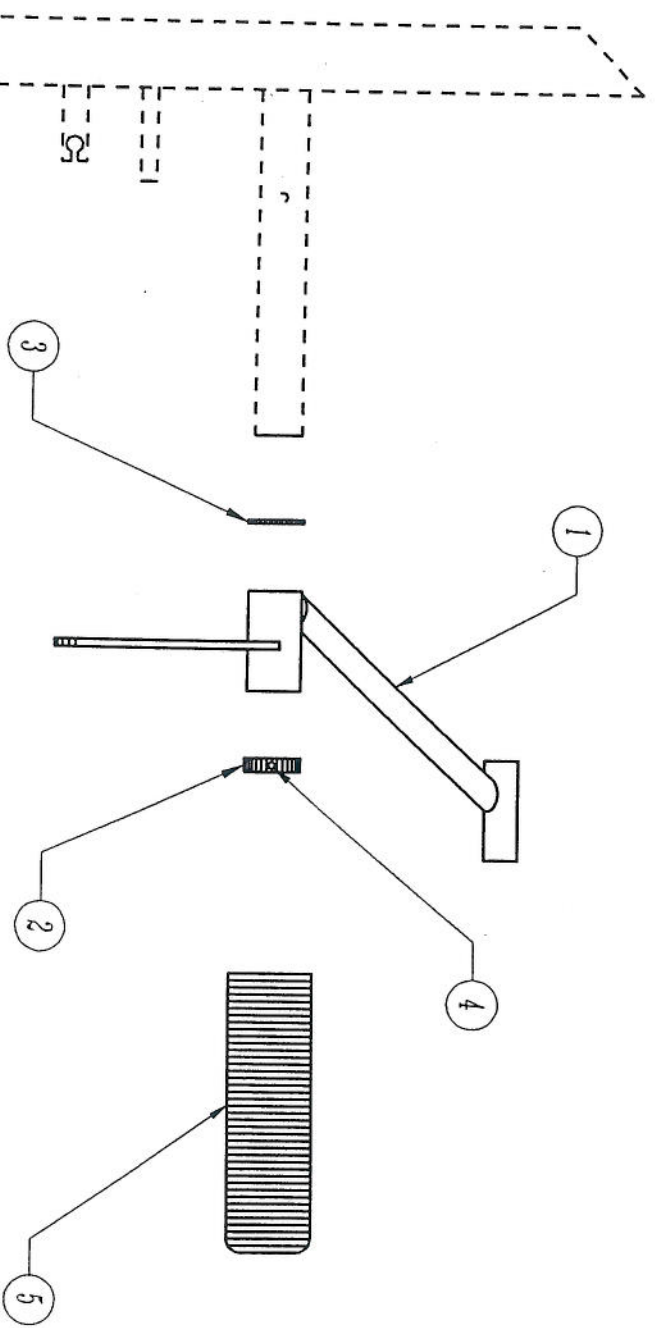
ASSY # KA7016



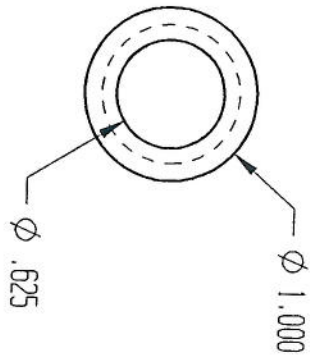
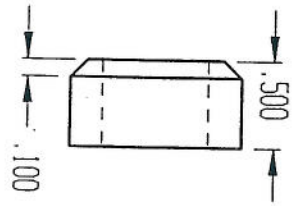


ITEM	QTY	DESCRIPTION
5	1	.875 I/D RUBBER GRIP
4	1	.125 DIA 1/4" GRIP POP RIVET
3	1	.880 I/D 1.0 O/D X .062 THK DELRIN WASHER
2	1	KA7009, COLLAR
1	1	KA7015, BRAKE PEDAL

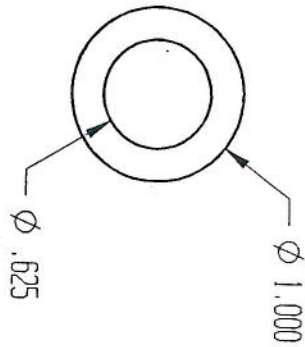
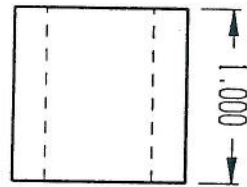
KEMMERIES AVIATION	DWG NAME	FOOT BRAKE	REV
SCALE NONE	SHEET	1 of 1	-



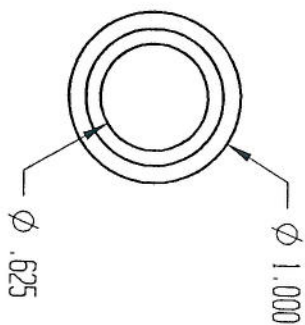
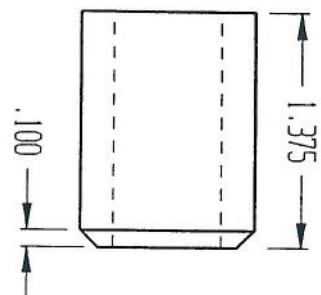
5	1	.875 I/D RUBBER GRIP
4	1	.125 DIA 1/4" GRIP POP-RIVET
3	1	.880 I/D X 1.0 O/D X .062 THK DELRIN WASHER
2	1	KA7009, COLLAR
1	1	KA7016, THROTTLE PEDAL
ITEM QTY DESCRIPTION		
KENNERIES AVIATION DWG NAME FOOT THROTTLE		
SCALE NONE		REV
SHEET 1 of 1		-



ITEM 1  
KAB001



ITEM 2  
KAB002



ITEM 3  
KAB003

NOTES: REMOVE ALL BURRS AND SHARP EDGES  
MATERIAL: 1.0 OD .625 ID 5052-H32 ALUM TUBE

KEMMERLE AVIATION

DRG. NO.

FRONT WHEEL SPACERS

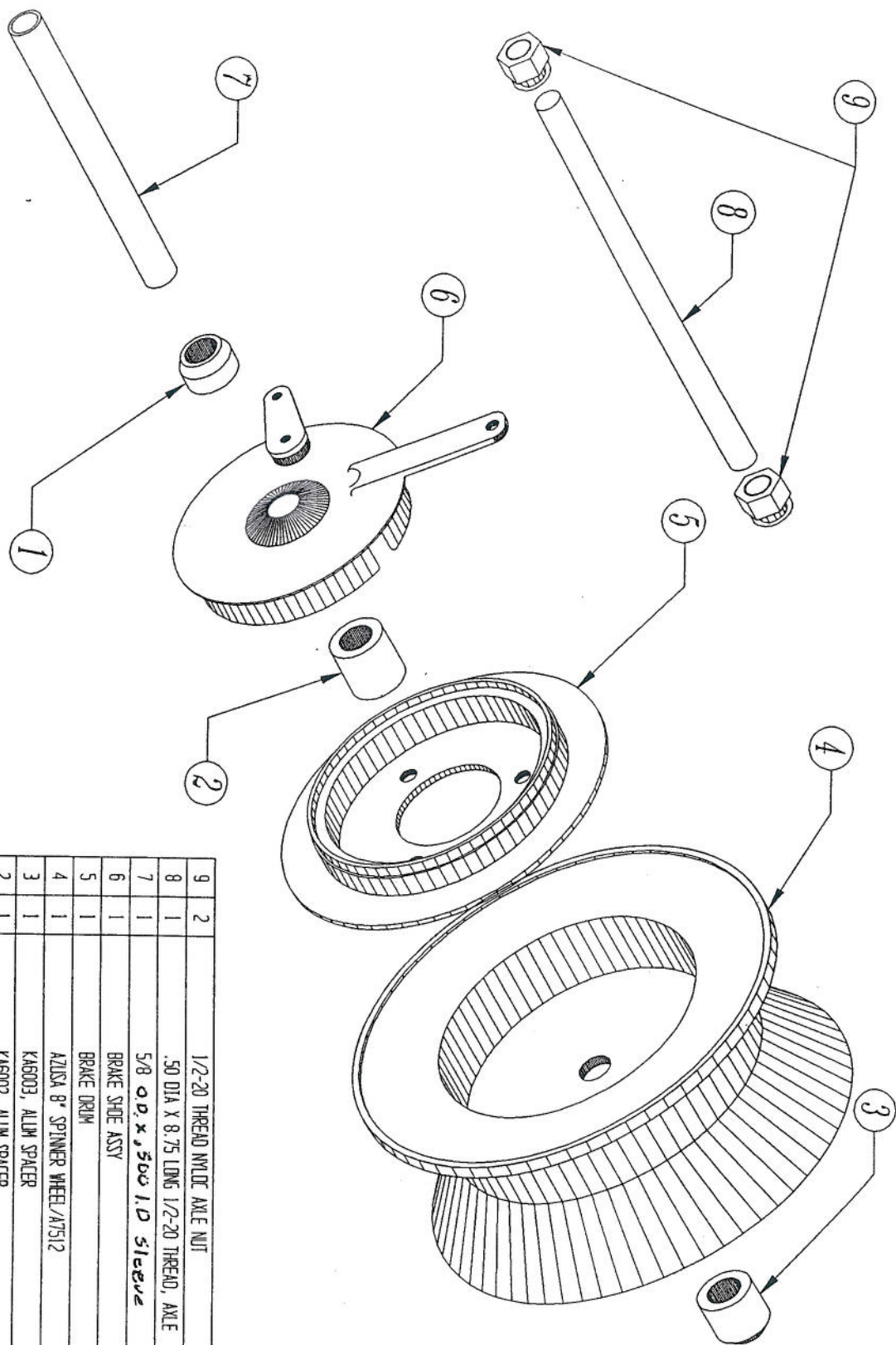
REV

SCALE NONE

10-94 RAE SHEET 1 of 1

PART # KAB000





ITEM	QTY	DESCRIPTION
1	1	1/2-20 THREAD NUT, AXLE NUT
2	1	.50 DIA X 8.75 LONG 1/2-20 THREAD, AXLE
3	1	5/8 O.D. X .500 I.D. SLEEVE
4	1	BRAKE SHOE ASSY
5	1	BRAKE DRUM
6	1	ALISA 8" SPINNER WHEEL/A7512
7	1	KAG003, ALUM SPACER
8	1	KAG002, ALUM SPACER
9	1	KAG001, ALUM SPACER

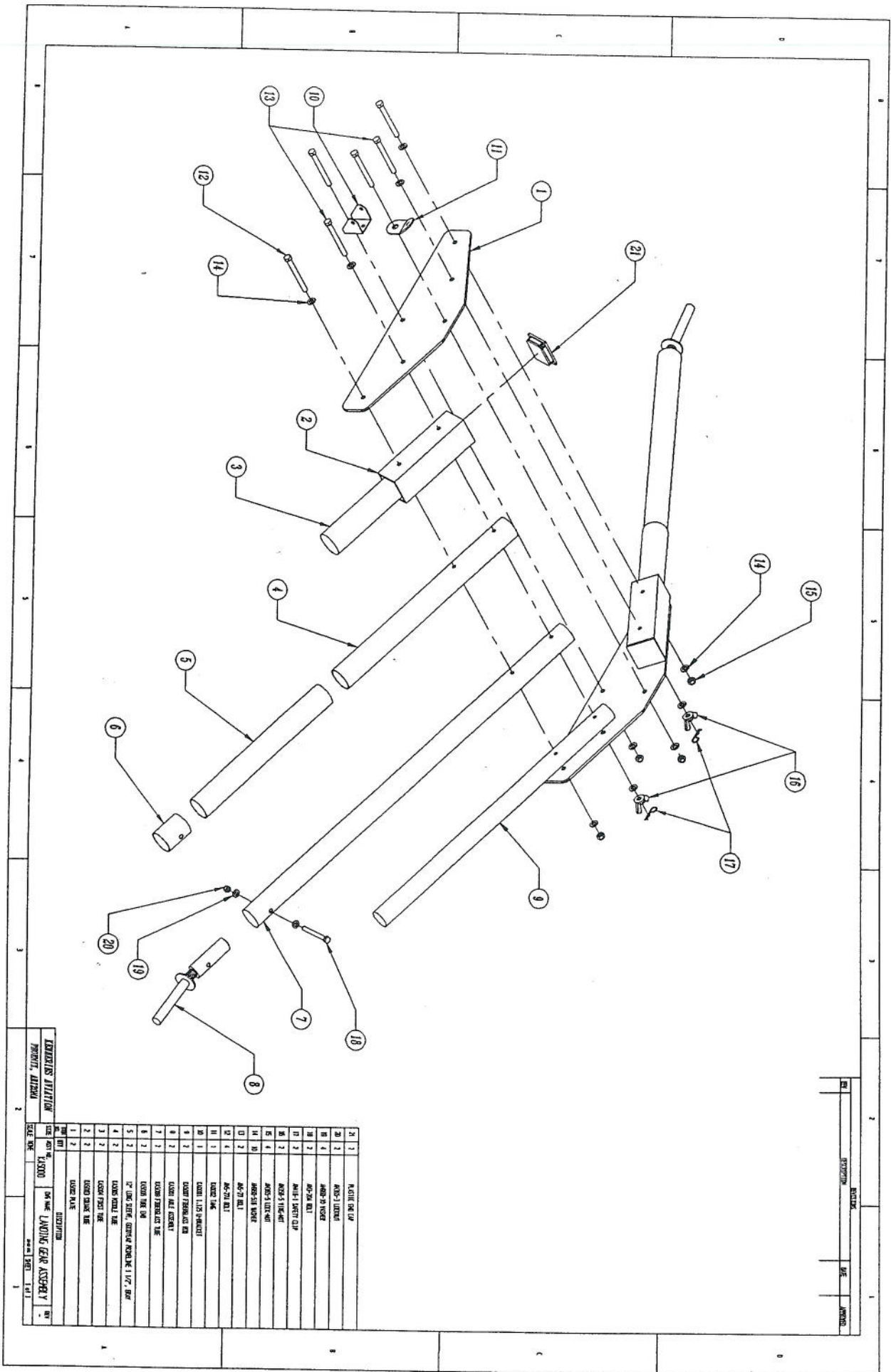
ASSY # KA6000

SCALE	NONE	DWG NO.	FRONT WHEEL ASSY.	REV
10-94 REC	SHEET	1 of 1		

# **TUKAN**

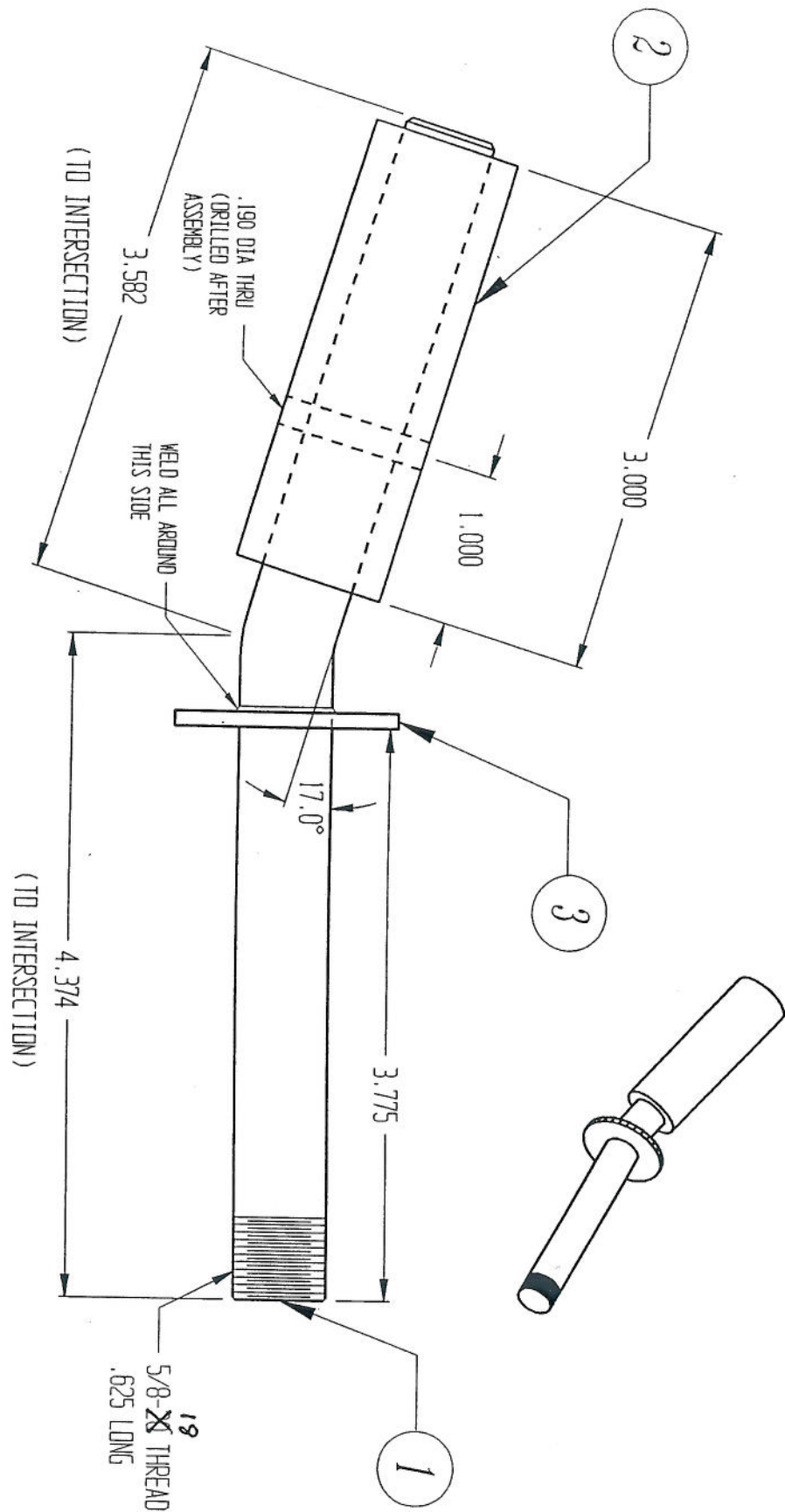
## **LANDING GEAR ASSEMBLY KA-5**

**KA# 5000 ASSEMBLY  
KA# 5001 REAR AXLE  
KA# 5002 FRONT PLATE  
KA# 5003 SQUARE TUBE  
KA# 5004 UPPER TUBE  
KA# 5005 MIDDLE TUBE  
KA# 5006 TUBE END  
KA# 5007 UPPER ROD  
KA# 5008 HOLLOW FIBERGLASS TUBE  
KA# 0001 MOUNT BRACKET  
KA# 0002 MUFFLER MOUNT TANG**



REVISIONS		DATE	BY	REASON
1		1-1-71	J. J. JONES	INITIAL DESIGN
2		1-1-71	J. J. JONES	REVISED DESIGN
3		1-1-71	J. J. JONES	REVISED DESIGN
4		1-1-71	J. J. JONES	REVISED DESIGN
5		1-1-71	J. J. JONES	REVISED DESIGN
6		1-1-71	J. J. JONES	REVISED DESIGN
7		1-1-71	J. J. JONES	REVISED DESIGN
8		1-1-71	J. J. JONES	REVISED DESIGN
9		1-1-71	J. J. JONES	REVISED DESIGN
10		1-1-71	J. J. JONES	REVISED DESIGN
11		1-1-71	J. J. JONES	REVISED DESIGN
12		1-1-71	J. J. JONES	REVISED DESIGN
13		1-1-71	J. J. JONES	REVISED DESIGN
14		1-1-71	J. J. JONES	REVISED DESIGN
15		1-1-71	J. J. JONES	REVISED DESIGN
16		1-1-71	J. J. JONES	REVISED DESIGN
17		1-1-71	J. J. JONES	REVISED DESIGN
18		1-1-71	J. J. JONES	REVISED DESIGN
19		1-1-71	J. J. JONES	REVISED DESIGN
20		1-1-71	J. J. JONES	REVISED DESIGN
21		1-1-71	J. J. JONES	REVISED DESIGN

QTY	PART NO	DESCRIPTION
1	1	MAIN STRUT
1	2	LANDING GEAR DOOR
1	3	LANDING GEAR DOOR HINGE
1	4	LANDING GEAR DOOR LATCH
1	5	LANDING GEAR DOOR LOCK
1	6	LANDING GEAR DOOR PIN
1	7	LANDING GEAR DOOR ROLLER
1	8	LANDING GEAR DOOR SPRING
1	9	LANDING GEAR DOOR BUSH
1	10	LANDING GEAR DOOR WASH
1	11	LANDING GEAR DOOR NUT
1	12	LANDING GEAR DOOR WASHER
1	13	LANDING GEAR DOOR SCREW
1	14	LANDING GEAR DOOR BOLT
1	15	LANDING GEAR DOOR PLATE
1	16	LANDING GEAR DOOR BRACKET
1	17	LANDING GEAR DOOR PIN
1	18	LANDING GEAR DOOR ROLLER
1	19	LANDING GEAR DOOR SPRING
1	20	LANDING GEAR DOOR BUSH
1	21	LANDING GEAR DOOR WASH

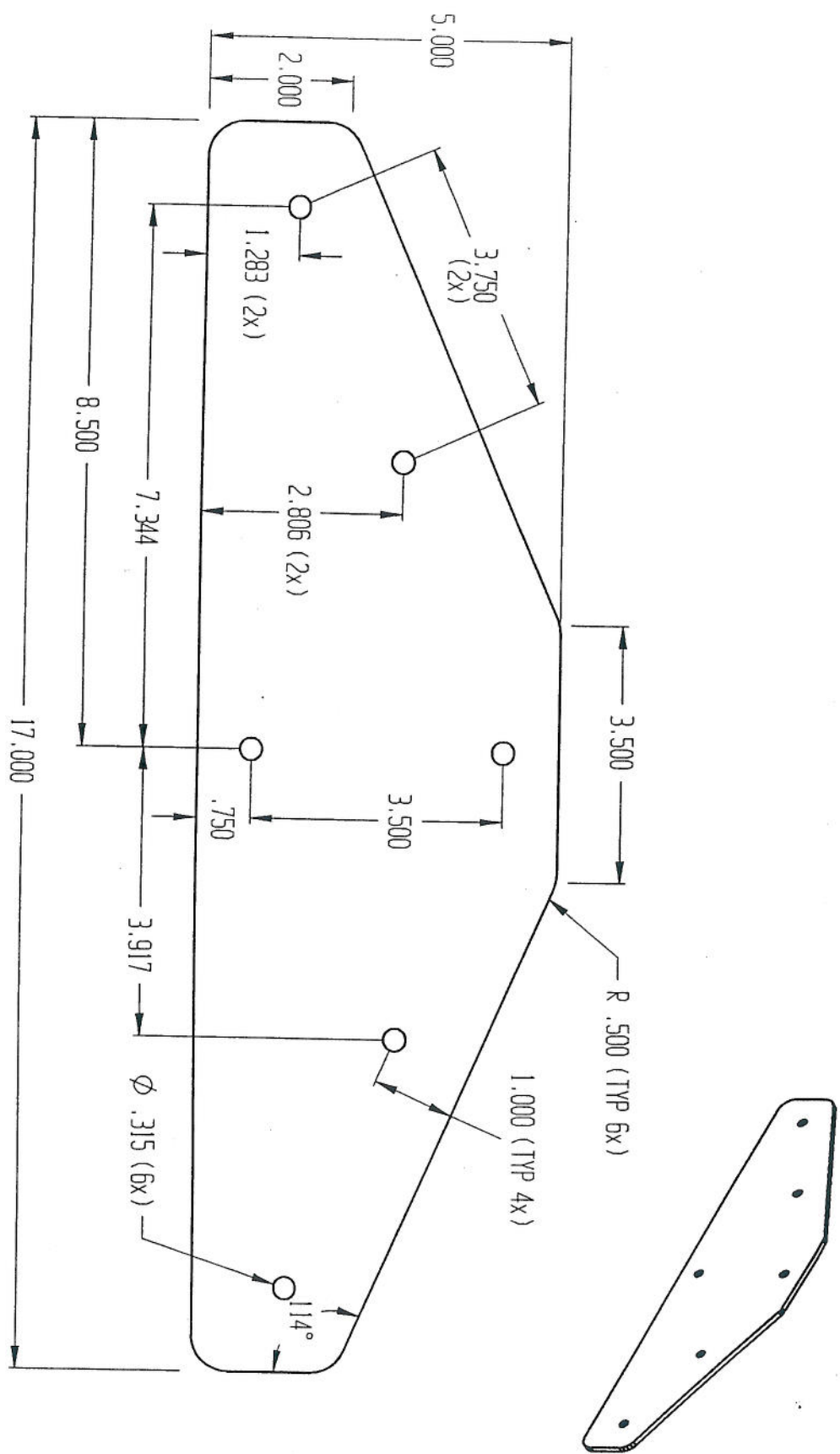


FINISH: ZINC PLATE - YELLOW

ITEM	QTY	DESCRIPTION
3	1	1.5 OD X .625 ID X .102 THK CRS WASHER
2	1	1.0 OD X .625 ID ALUM TUBE
1	1	5/8 DIA CRS ROD
KEMMERIES AVIATION DWG NAME REAR AXLE ASSY		
SCALE NONE 10-94 R/E SHEET 1 of 1		
REV		

PART # KA5001



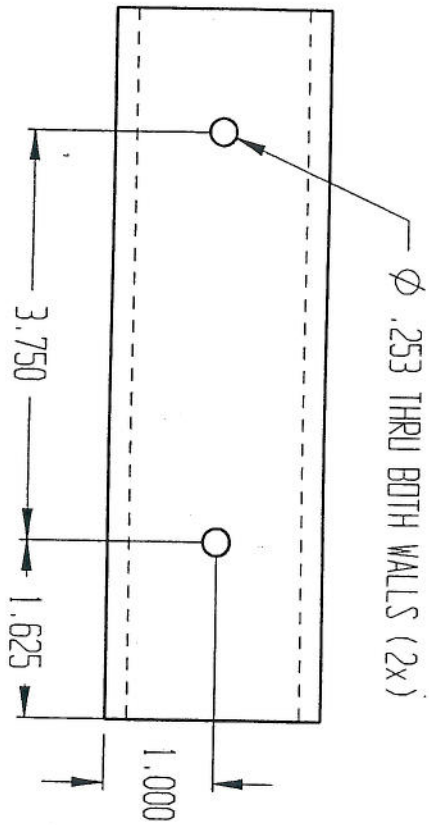
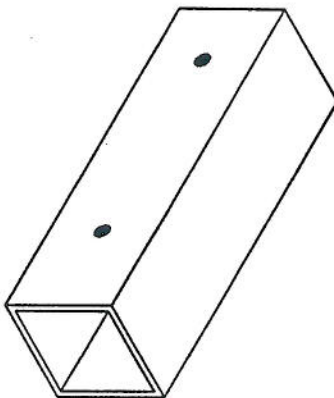
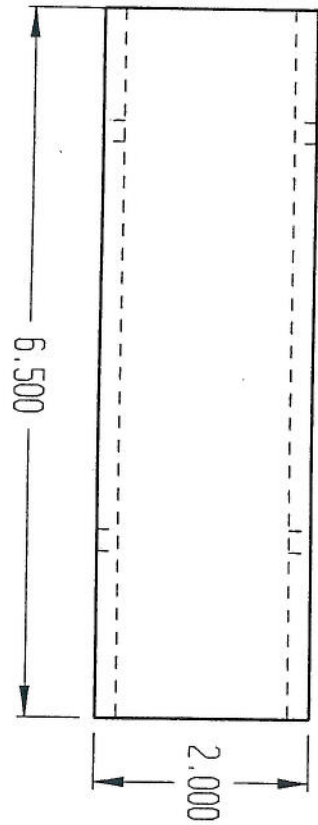


NOTES: REMOVE ALL BURRS AND SHARP EDGES

MATERIAL: .187 THK 2024-T3 ALUM SHEET

KEMMERIES AVIATION		DWG NAME		FRONT PLATE		REV
SCALE	NONE	10-94 BAC	SHEET	1 of 1		



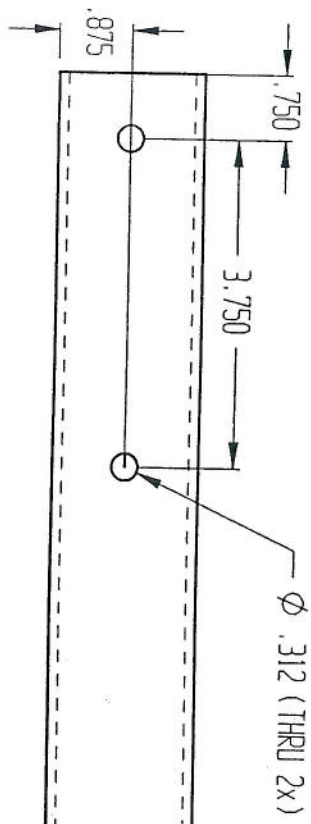
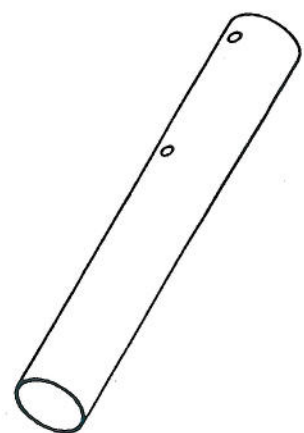
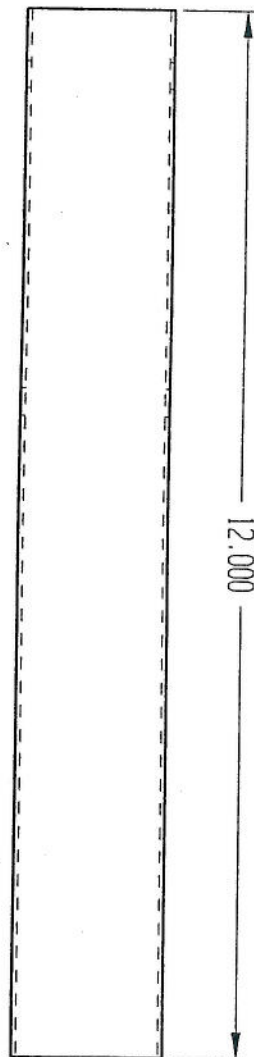


NOTES: REMOVE ALL BURRS AND SHARP EDGES

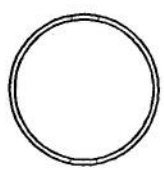
MATERIAL: 2" SQ. .125 THK WALL 6061-T6 ALUM TUBE

KENNERIES AVIATION		DWG NAME RS, SQUARE TUBE		REV
SCALE	NONE	10-94 R/E	SHEET	1 of 1

PART # KA5003



CHAMFER ALL AROUND  
INSIDE THIS END FOR  
STRESS RELIEF

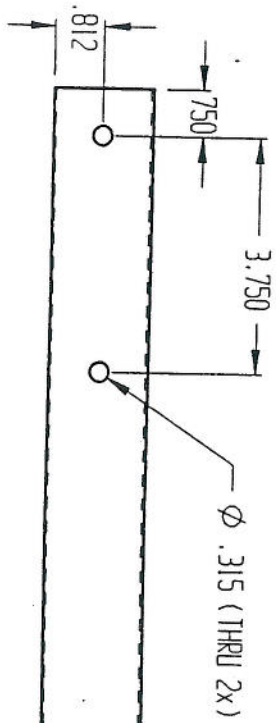
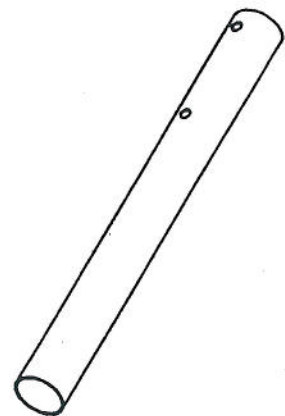
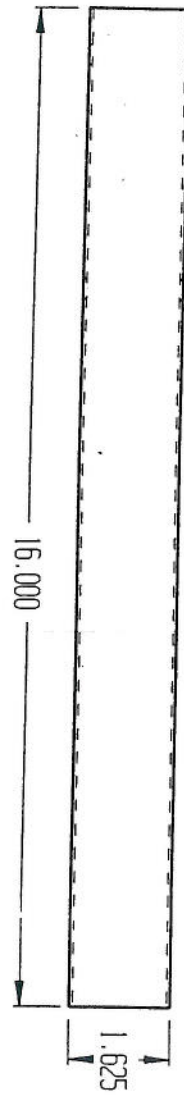


NOTES: REMOVE ALL BURRS AND SHARP EDGES

MATERIAL: 1.75 DIA .058 WALL 6061-T6 ALUM TUBE

KEMMERLES AVIATION		DWG NAME		UPPER TUBE		REV
SCALE	NONE					
10-24 RLE		SHEET		1 of 1		-

PART # KA5004

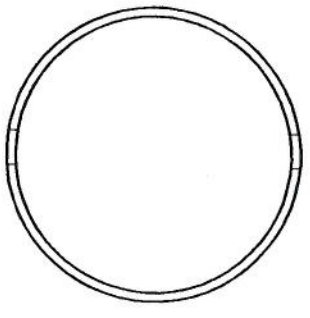
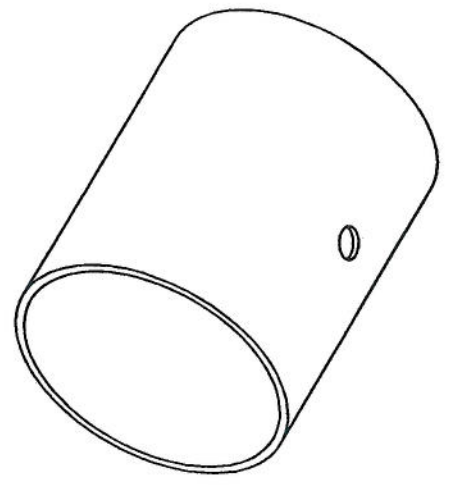
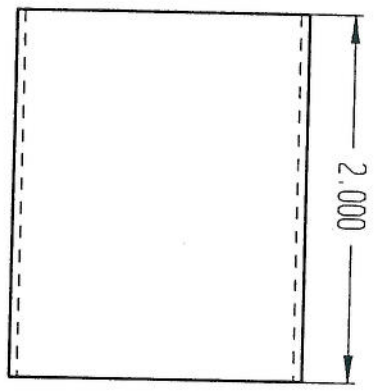
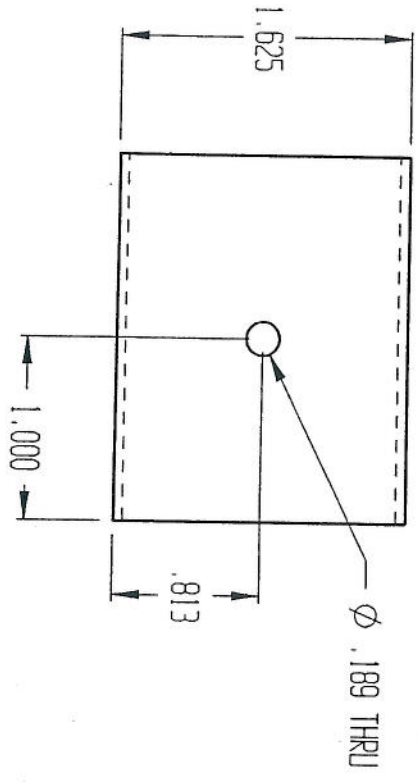


CHAMFER ALL AROUND  
INSIDE TUBE FOR  
STRESS RELIEF

NOTES: REMOVE ALL BURRS AND SHARP EDGES

MATERIAL: .049 THK 6061-T6 ALUM TUBE			
KEMMERIES AVIATION		DWG. NAME	MIDDLE TUBE
SCALE	NONE	SHEET	1 of 1
		REV	-

PART # KA5005



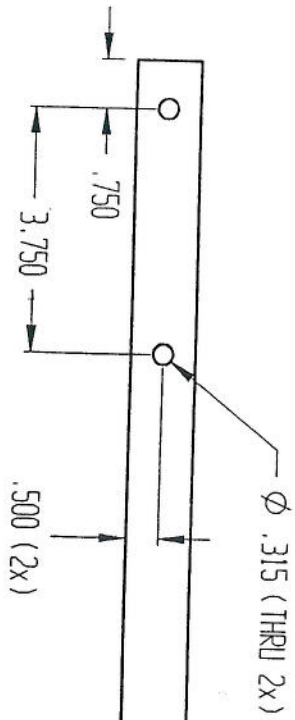
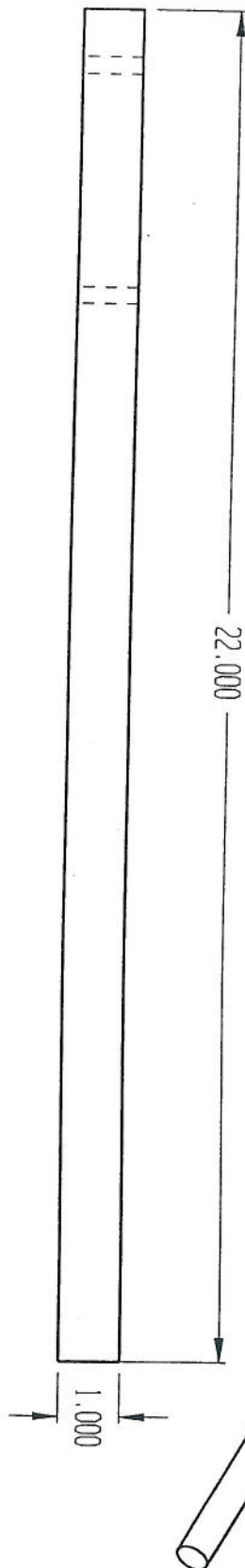
NOTES: REMOVE ALL BURRS AND SHARP EDGES

MATERIAL: 1.625 DIA .049 THK WALL 6061-T6 ALUM TUBE

KEMMERIES AVIATION DWG NAME TUBE END

SCALE NONE 10-24 RAE SHEET 1 of 1

PART # KA5006



MATERIAL: 1" DIA. FIBERGLASS ROD

KEMMERIES AVIATION DWG. NAME

UPPER ROD

SCALE NONE

10-24 RUC

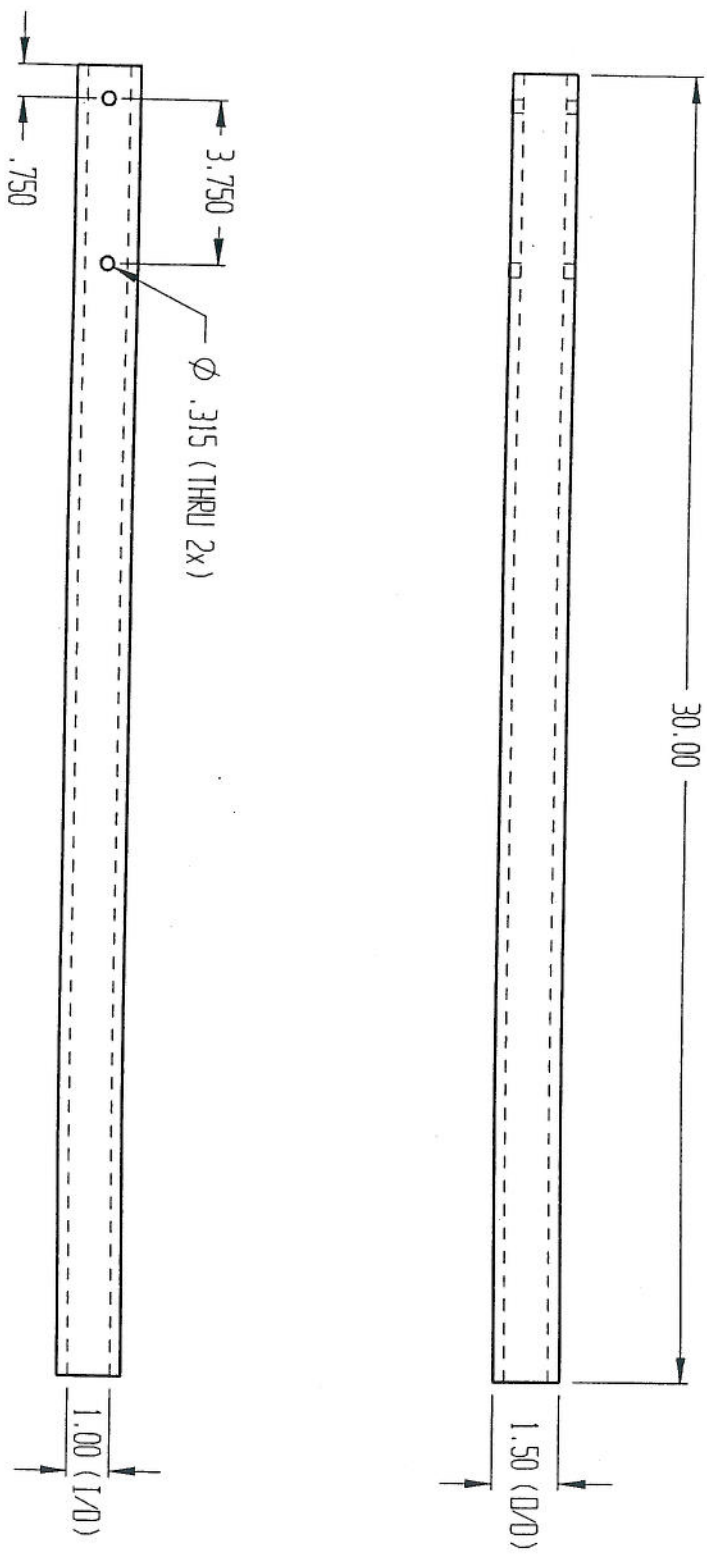
SHEET

1 of 1

REV

PART # KA5007





NOTES: REMOVE ALL BURRS AND SHARP EDGES

MATERIAL: 1.50 O/D 1.0 I/D FIBERGLASS TUBE

KEMMERIES AVIATION

DWG. NAME

HOLLOW F/G TUBE

REV

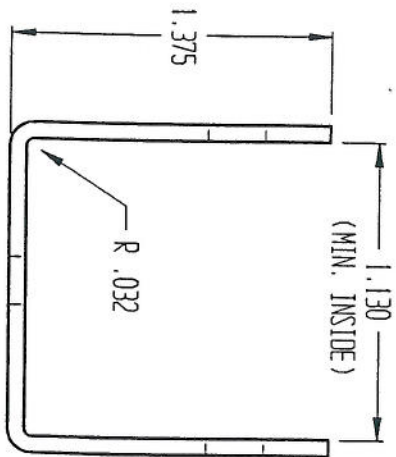
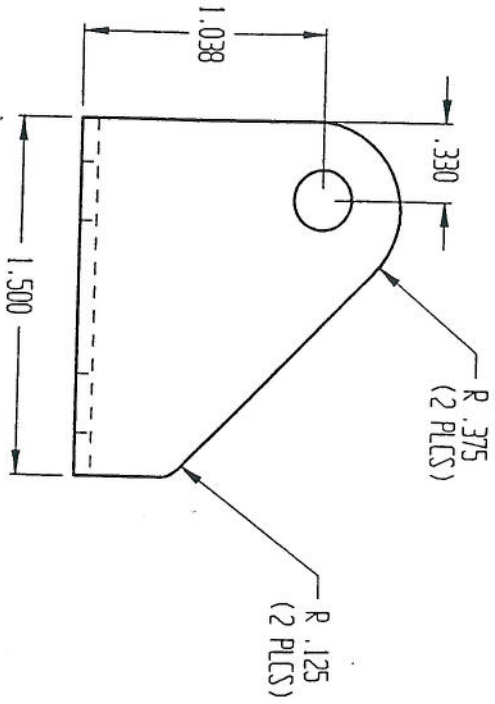
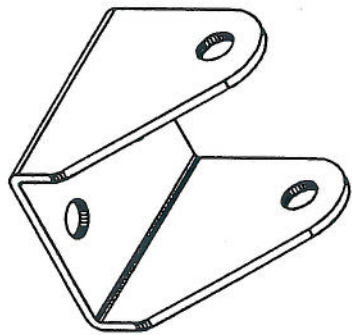
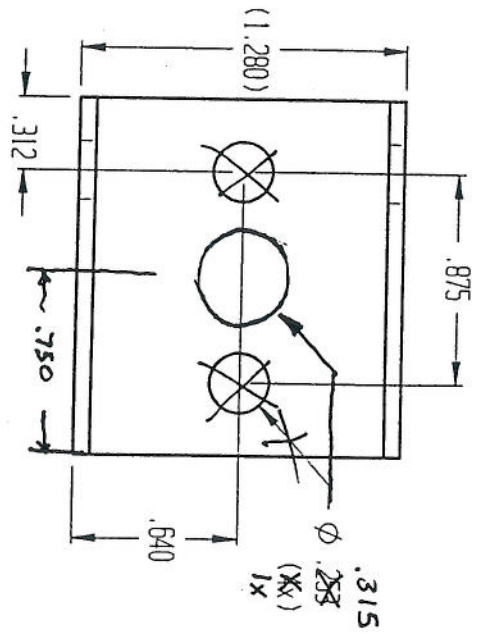
SCALE NONE

10-24 RLE

SHEET

1 of 1

PART # KA5008



NOTE: REMOVE ALL BURRS AND SHARP EDGES

MATERIAL: .075 THK 302/304 #2 FINISH CRES

KENNERIES AVIATION		DWG. NAME		REV	
SCALE NONE		1.125 MOUNT BRACKET		-	
SHEET		1 of 1			

PART # KA0001